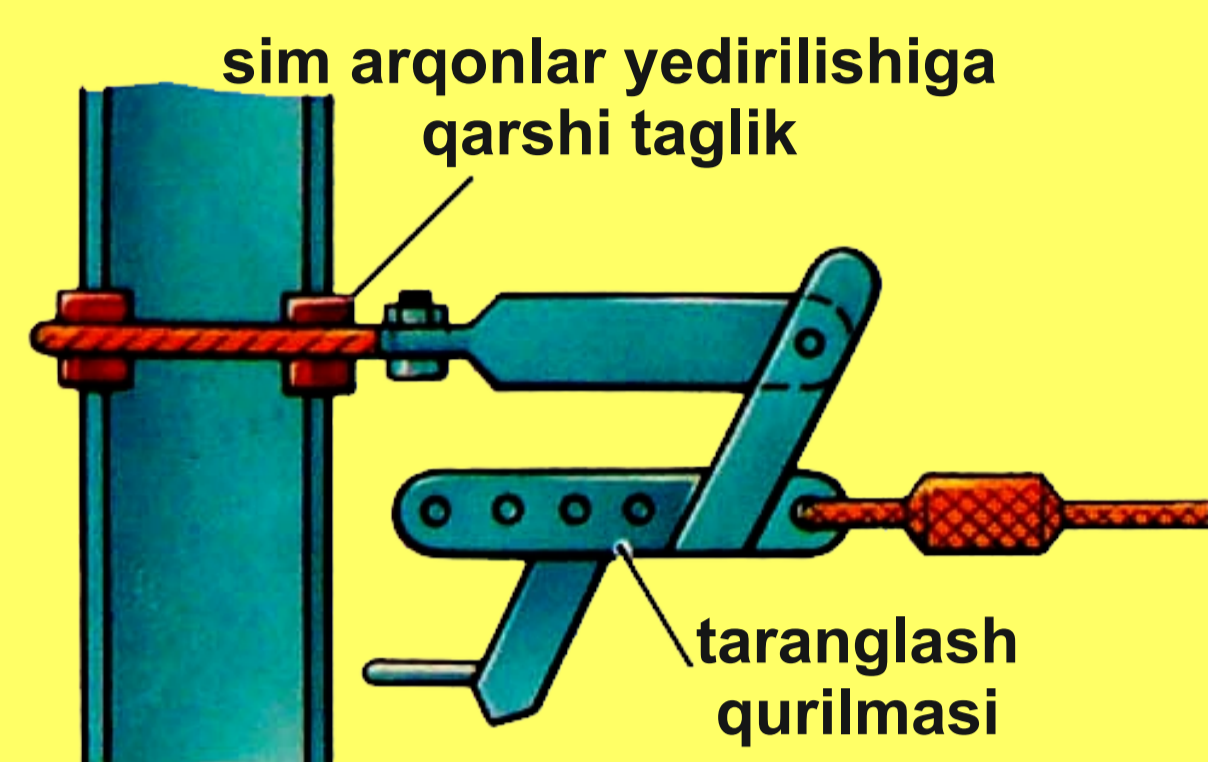




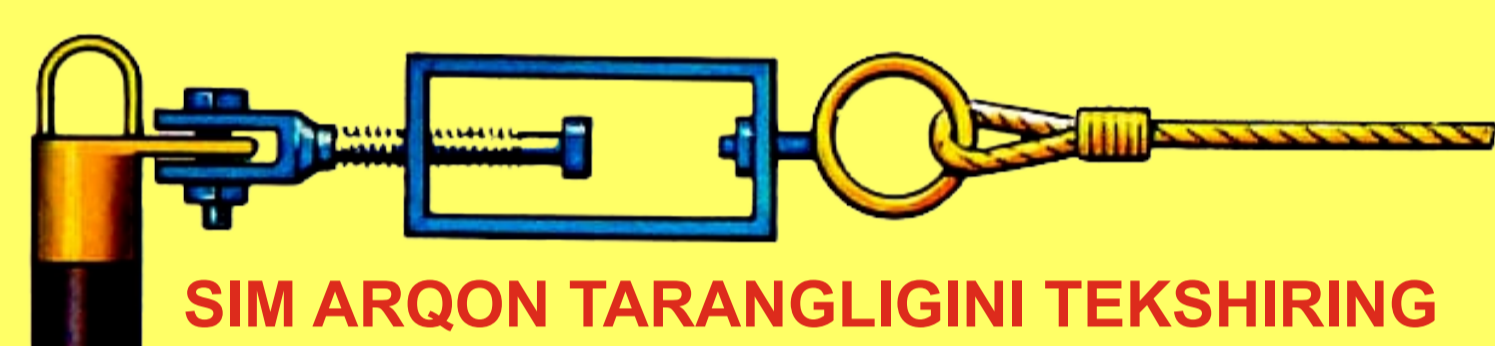
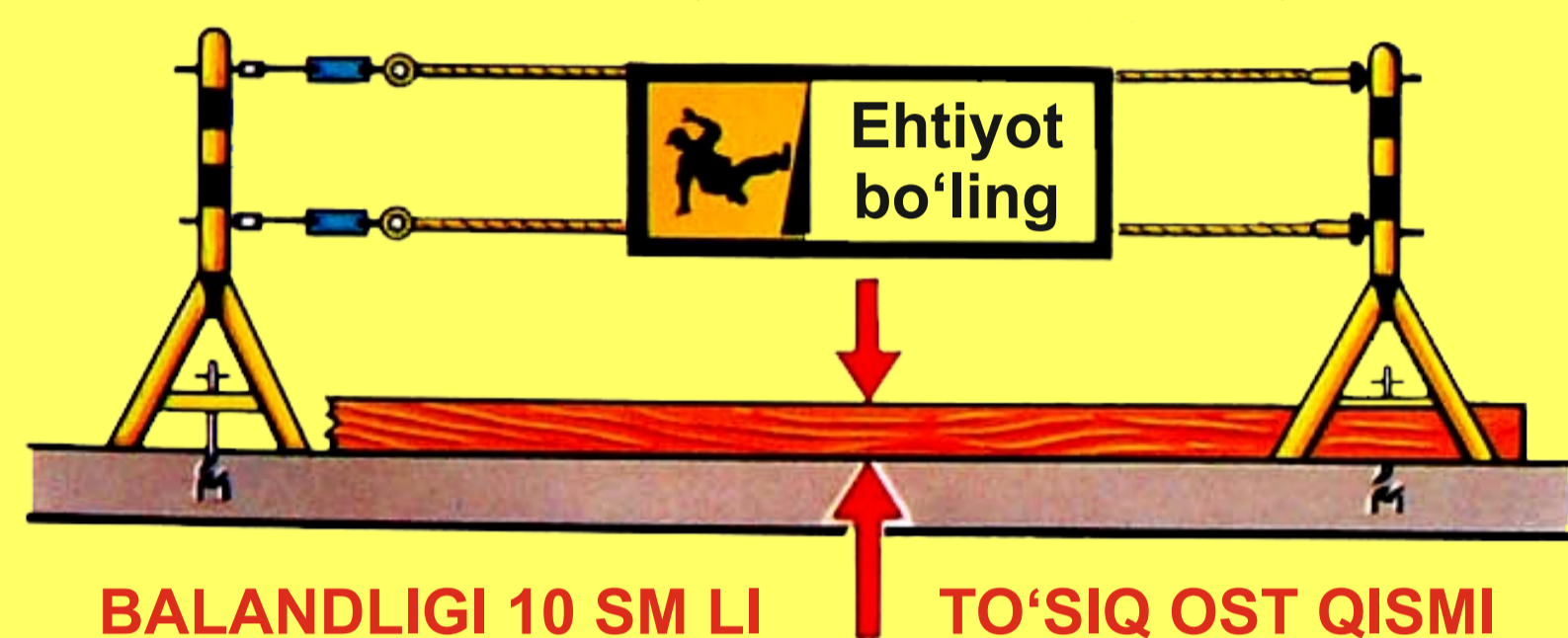
HIMOYA TO'SIQLARI VA ULARNI O'RNATISHDA XAVFSIZLIK TALABLARI

HIMOYALOVCHI SIM ARQONLAR ГОСТ 12.4.107-2012

MAHKAMLASH TUGUNI



SIM ARQONLI TO'SIQ

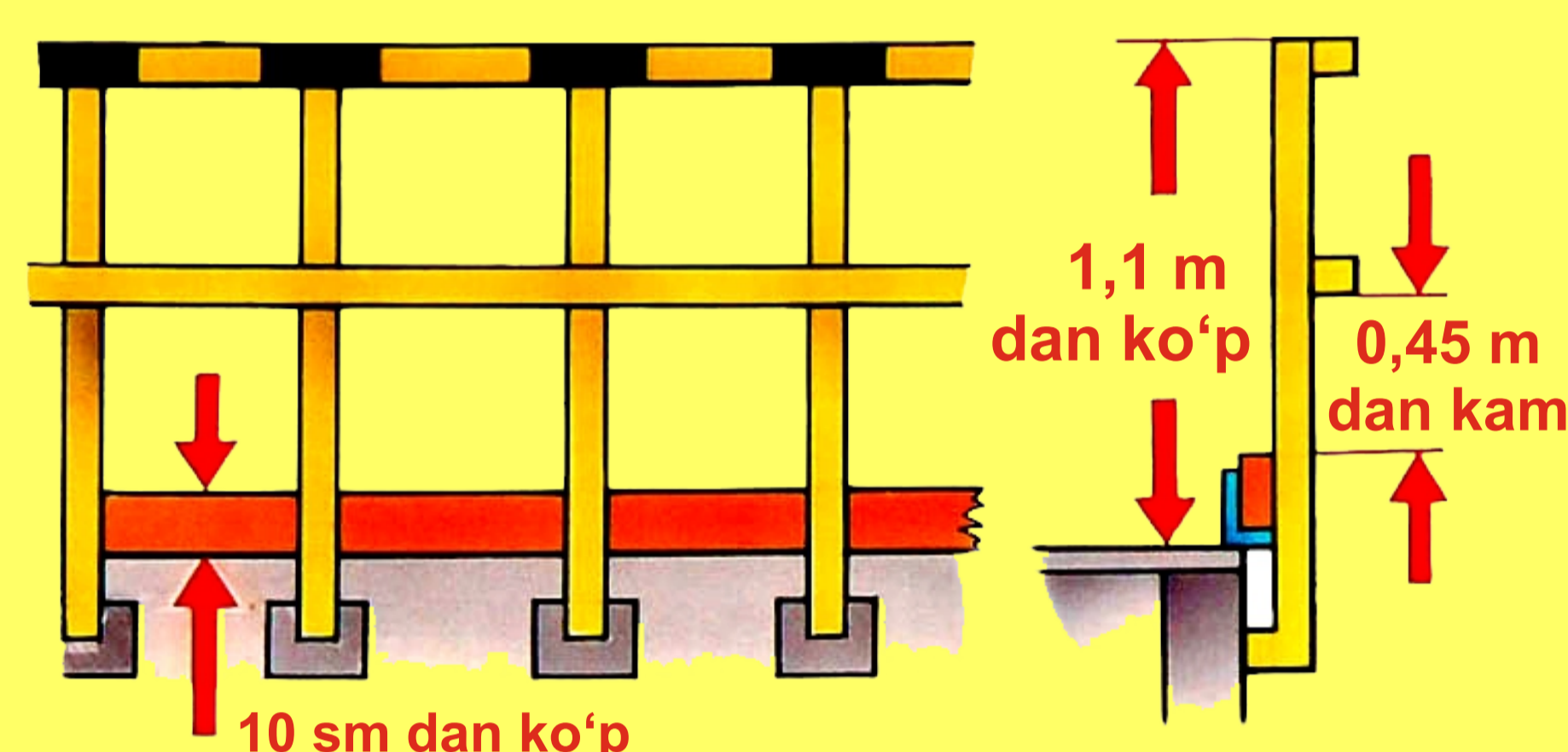


QUYIDAGI SIM ARQON TURLARINI ISHLATISHGA RUXSAT ETILADI

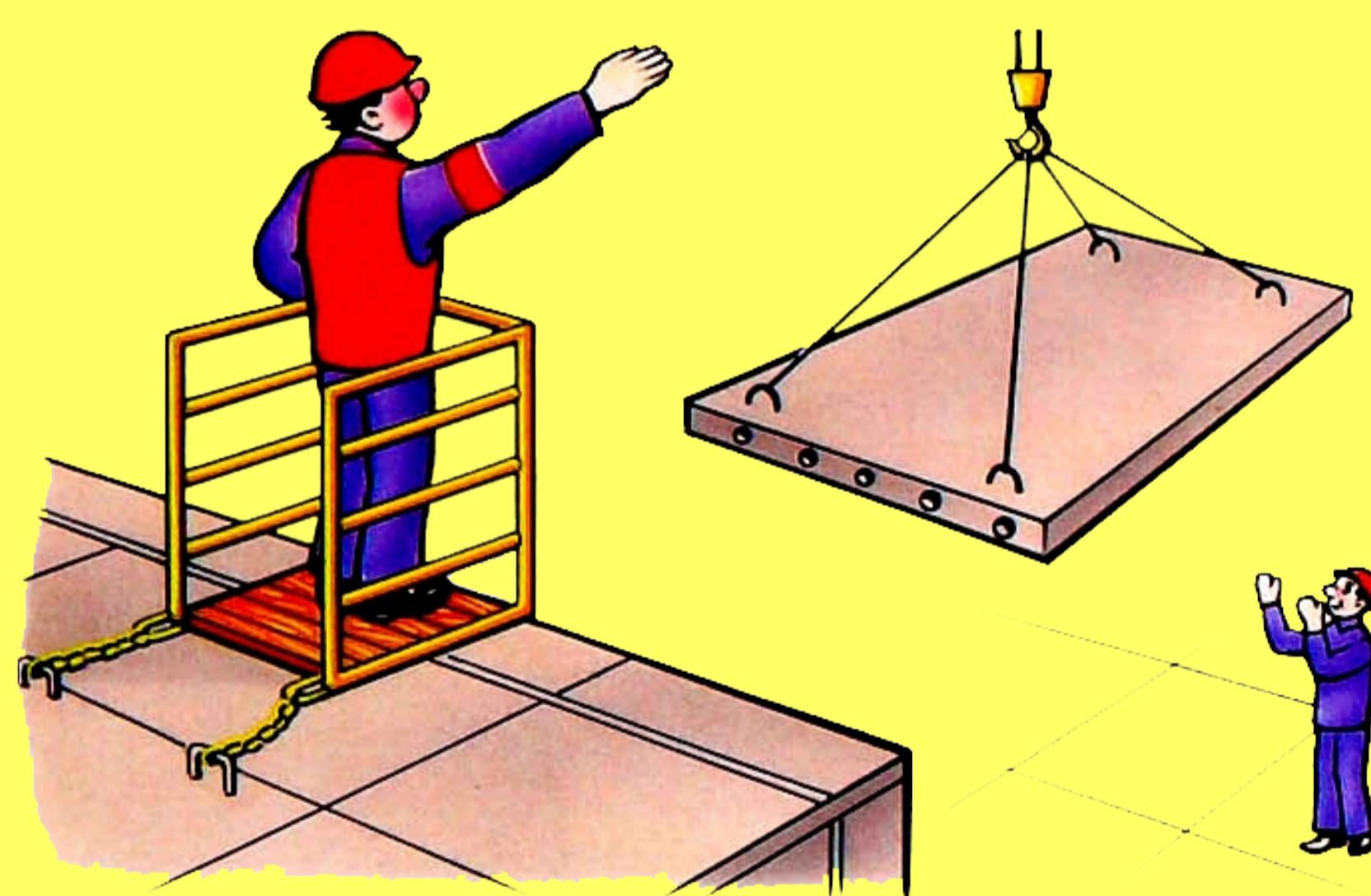
SIM ARQON TORTILISH BALANDLIGI	
1,2 metrdan baland	1,2 metrdan kam
8,8 mm ГОСТ 3077-80	10,5 mm ГОСТ 3077-80 ëki ГОСТ 3069-80
9,1 mm ГОСТ 2688-80	11 mm ГОСТ 2688-80
9,7 mm ГОСТ 3069-80	

HIMOYA TO'SIQLARI

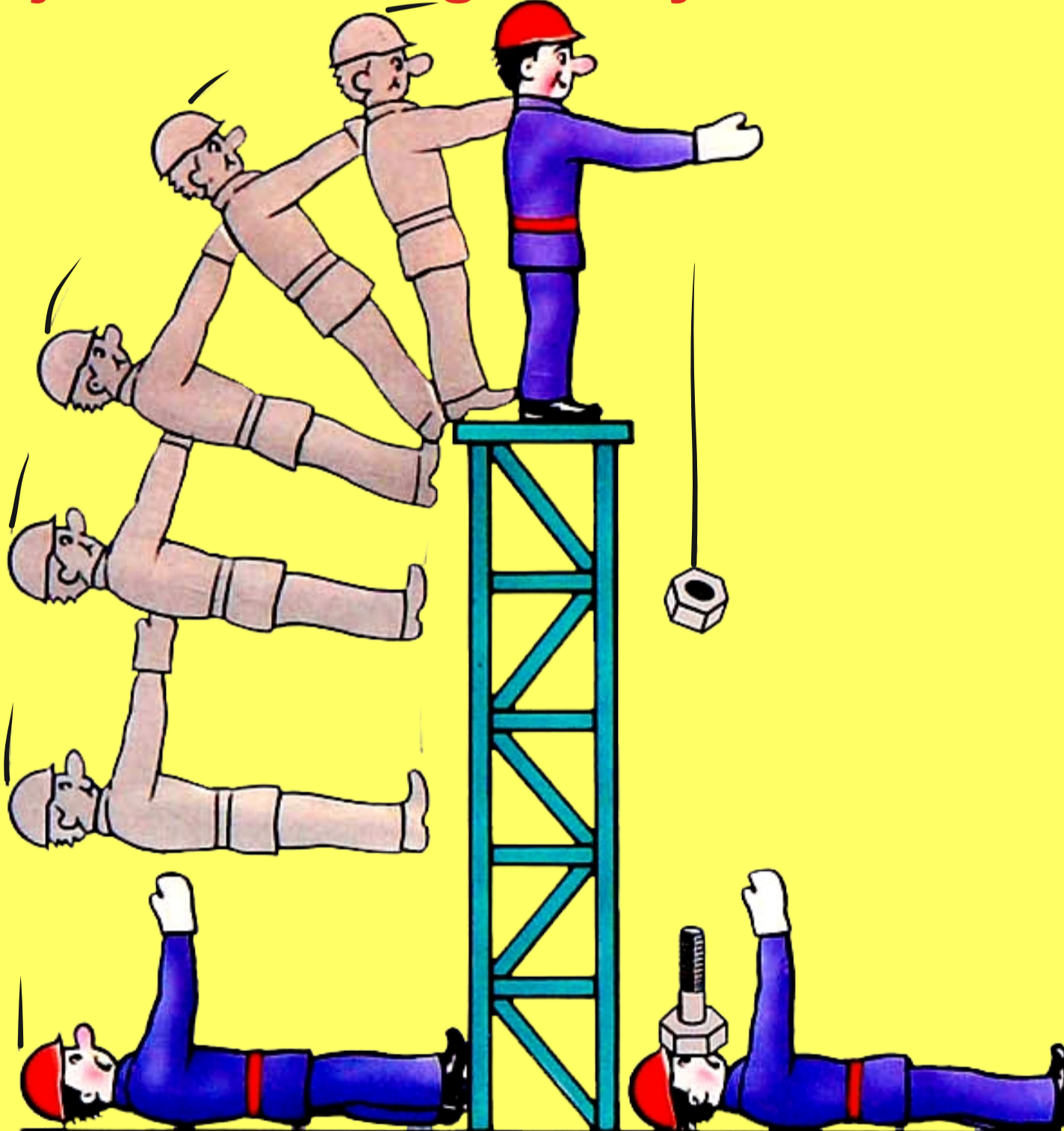
(TUSHISH XAVFI MAVJUD JOYLARGA O'RNATILADI)



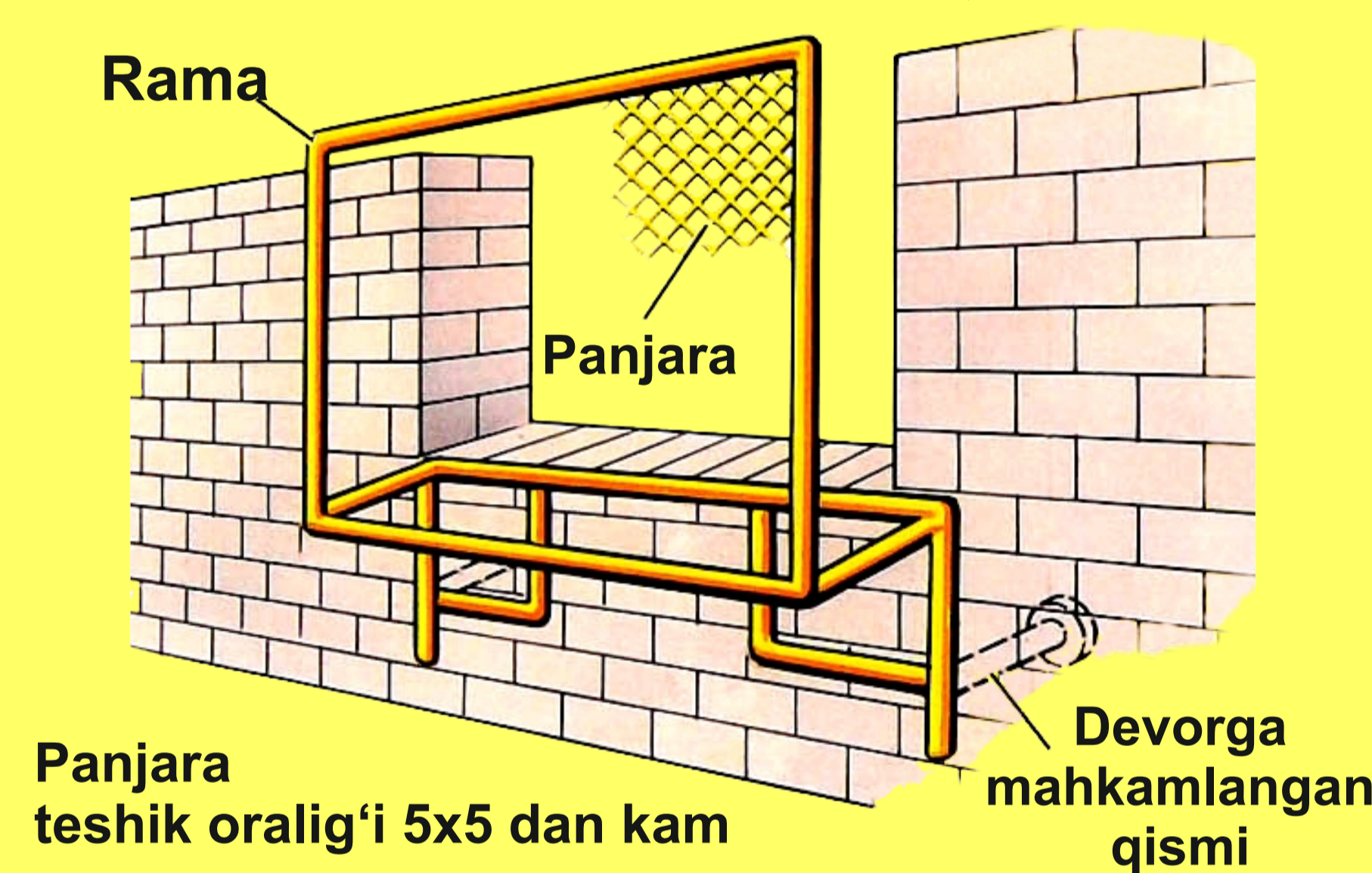
SIGNALCHIGA TO'SIQLI MAYDONI



jarohatlarning asosiy sabablari



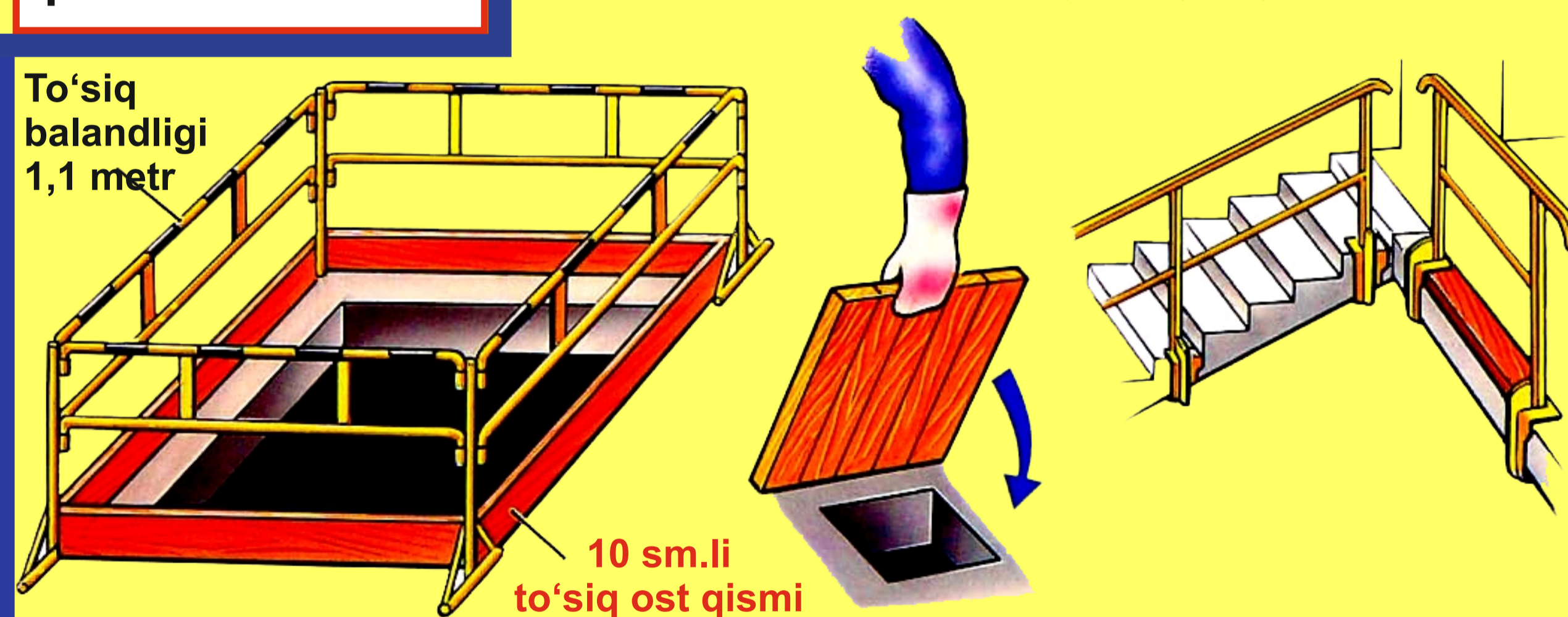
VERTIKAL BO'SHLIQ TO'SIG'I



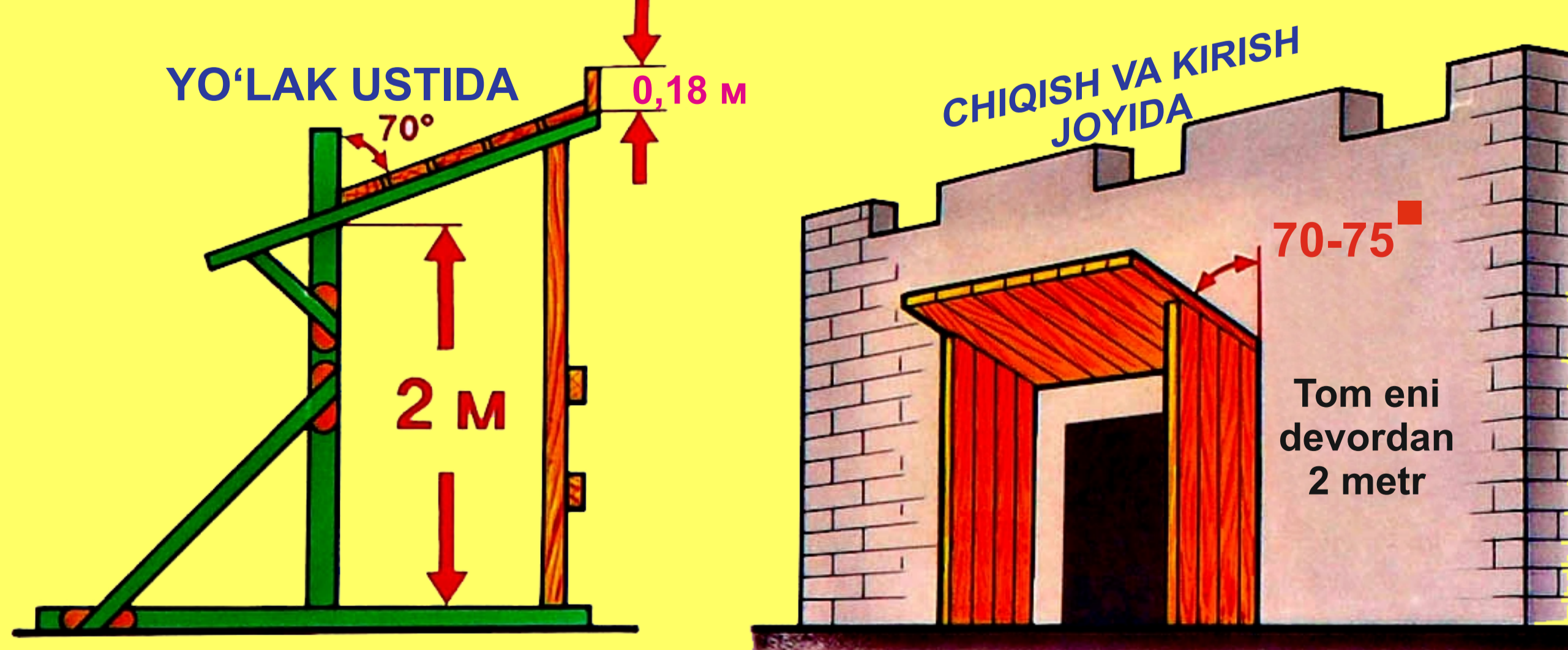
DEVORDAGI HIMOYALOVCHI TOM (Козырëк)



ZINA VA BO'SHLIQ TO'SIQLARI, TUYNUK QOPQOQLARI



HIMOYALOVCHI TOM (Козырëк)



TO'SIQ BELGILARI



XAVFSIZLIK QOIDALARIGA AMAL QILMASLIK, OG'IR OQIBATLARGA OLIB KELISHI MUMKIN

YUKLAB OLING

